

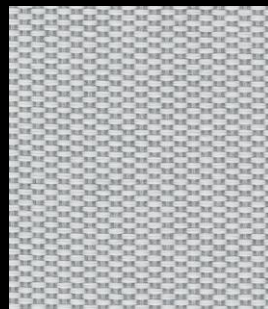
Patio

cat. Maxi

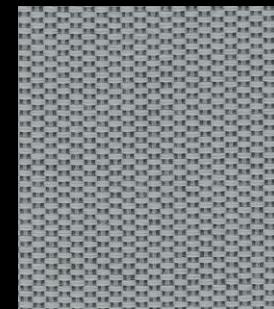
100% Trevira CS



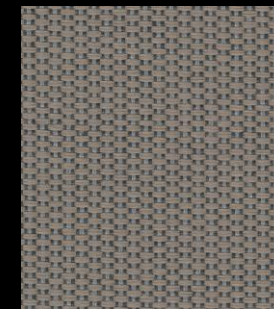
0100



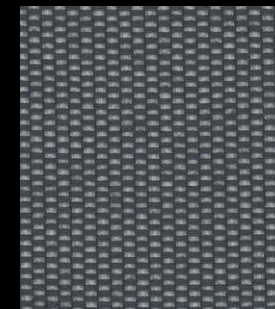
0110



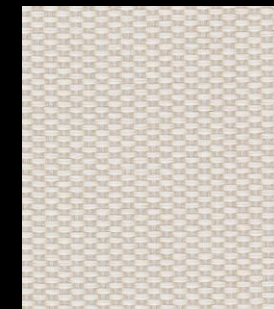
0140



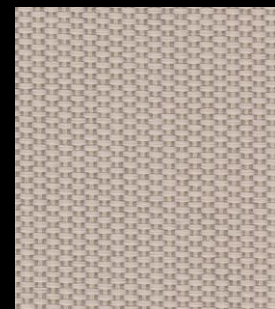
0150



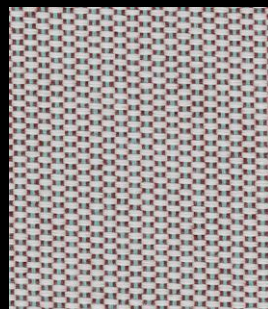
0170



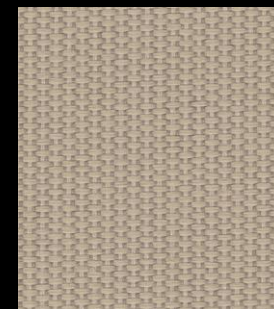
0200



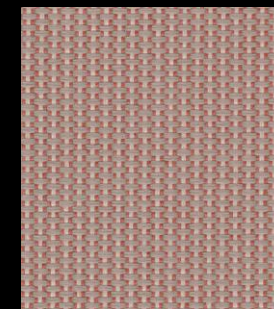
0210



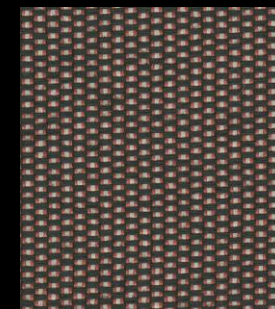
0220



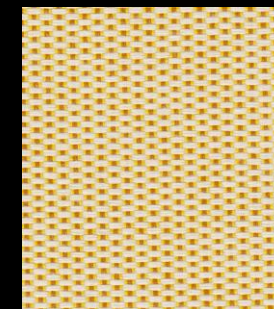
0230



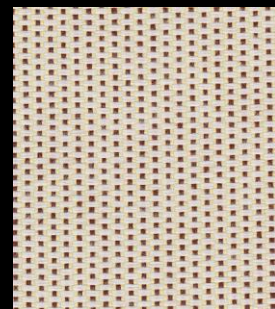
0340



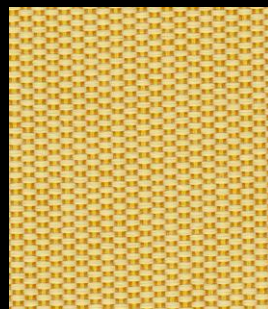
0370



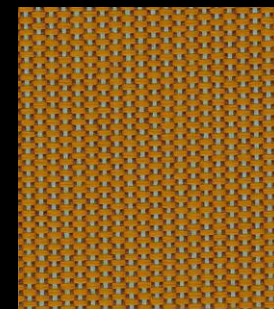
0410



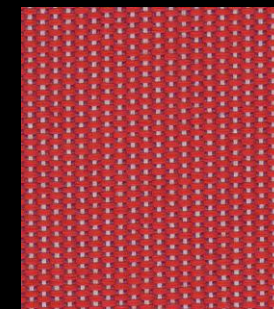
0430



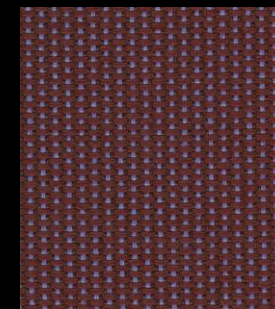
0440



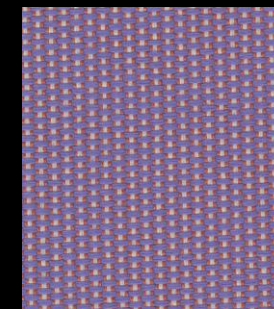
0450



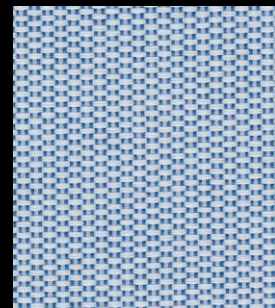
0550



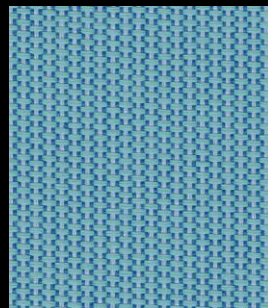
0570



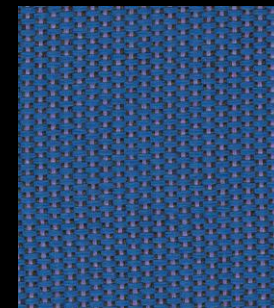
0650



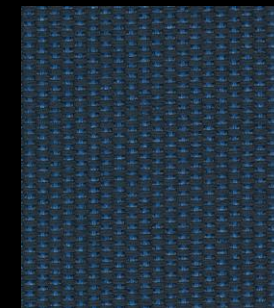
0730



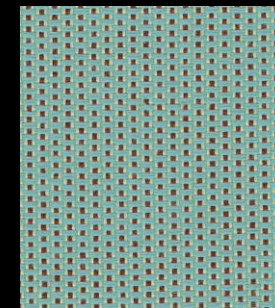
0740



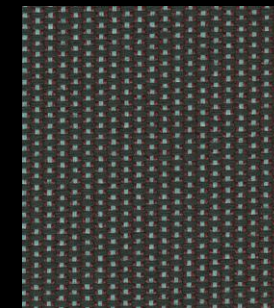
0750



0780



0840



0970

Technical details

Composition	100% Trevira CS
Weight	Gr./ml. 560
Abrasion test	Martindale - ISO 12947-2: 50.000 rubs
Pilling	ISO 12945-2:4/5
Fastness to rubbing	ISO 105-X12: dry 4/5 wet 4/8
Colour fastness to light	UNI EN ISO 105-B02: 7
Flame retardant	US Cal. Bull. 117-2013 NFPA 701 BS 5852 Crib 5 EN 1021-1/2 ASTM E84 Class B Adhered NF D 60 013 AS/NZS 3837 class 1 IMO FTP Code 2010 Part 8 DIN 4102 B1 NF P 92 507 M1 AS/NZS 1530.3 UNI 9175 1IM UNI 9177 Classe 1 EN 13501-1, B-s1, d0 ÖNORM B1/Q1 CAN ULC S102 IMO FTP Code 2010 Part 5 GB 8624 B1 ASTM E84 Class A Unadhered