

carbon



mirror



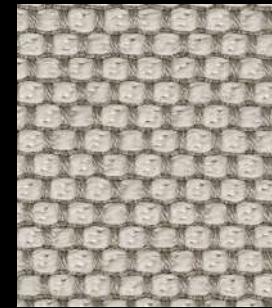
fango



taupe



flanell



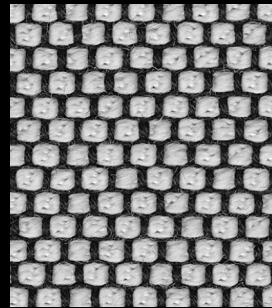
macadamia



calla



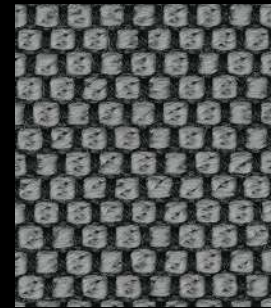
kristall



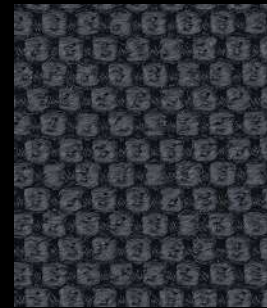
pepper



ebony



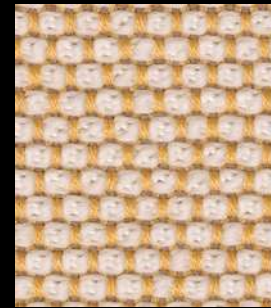
kies



anthrazit



rosewood



sorbet



aureo



prime



maple



lake



brick



jade



bleu



delft



navy



delphi



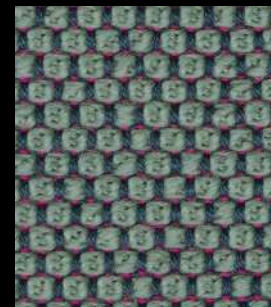
indio



guave



clementine



aloe



smaragd

# Opera

cat. Extra

96% virgin wool - 4% polyamide  
Flame retardant - 90.000 Martindale



Technical details

Composition	96% virgin wool - 4% polyamide
Weight	Gr./ml. 1010
Abrasion test	Martindale - ISO 12947-2: 90.000 rubs
Lightfastness	ISO 105-B02: 5/8
Pilling	ISO 12945-2: 4/5
Flame retardant	FAR 25.853 (12 sec. vertical) CAL TB 117 - 2013 DIN 4102-1 B2 EN 13501-1 EN 1021 1/2 BS 5852:2006 (part1) BS 5852:2006 (part2) Crib5 UNI 9175 (1 IM) IMO: 2014/90/EU Marine Equipment Directive
Features	NATURAL MATERIAL SOFT TOUCH
Environment	NATURAL RENEWABLE MATERIAL IWTO GUIDELINES FOR WOOL SHEEP WELFARE