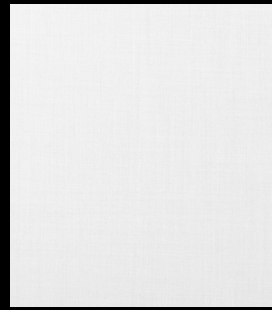


Tailor

cat. A

100% PES

Flame retardant - 100.000 Martindale



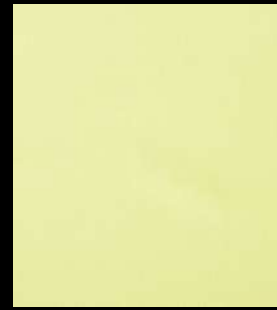
150



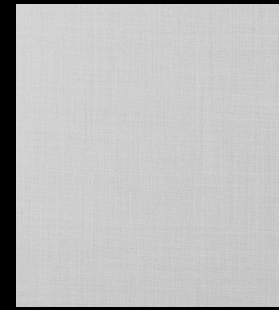
650



750



3150



4050



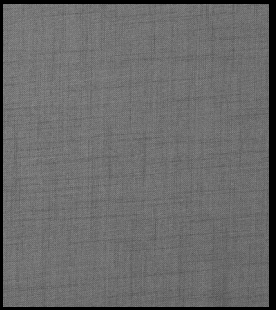
250



3550



1150



350



850



3750



3850



550



950



1250



2650



2550



1050



1350



1550



1650



3250



3350



3450



1750



3650



1850



2150



3950



2050



1950



2250



1450



450



2950



2350



2750



2850



3050



2450

Technical details

Composition	100% PES
Weight	Gr./m² 330
Abrasion test	Martindale - ISO 12947-2: 100.000 rubs
Lightfastness	ISO 105-B02: 6
Fastness to rubbing	ISO 105-X12: Wet 4/5 - Dry 4/5
Flame retardant	UNI 9175 classe 1IM EN 1021-1 EN 1021-2 TB 117:2013