

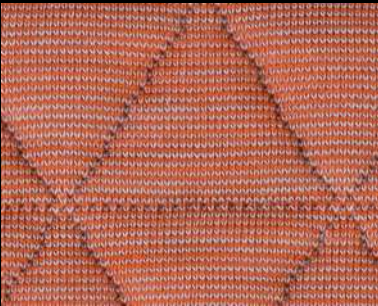


banana 0422

# Triangle

cat. Special

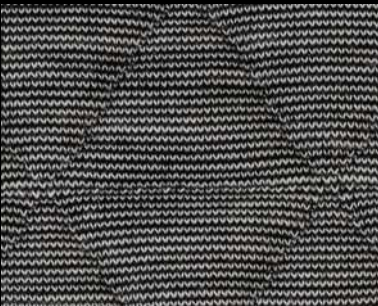
17% wool - 5% polyamide - 13% polyester -  
65% polyester filling  
Flame retardant - 60.000 Martindale



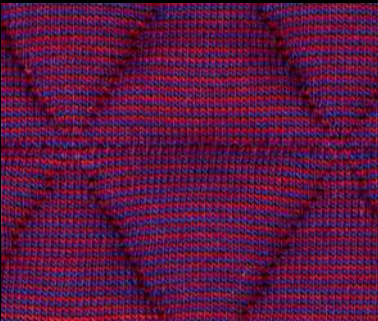
blush 0532



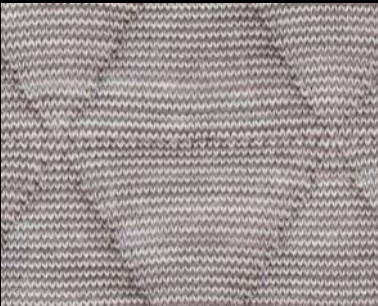
oase 0932



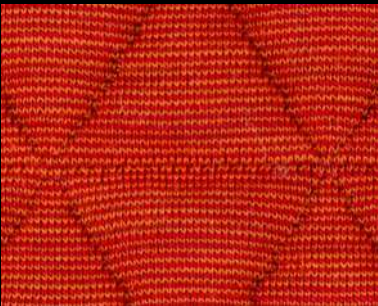
chalk 0152



blueberry 0672



pebble 0232



flame 0572



hydro 0772



brownie 0292



smoke 0122



rumba 0592



swamp 0972



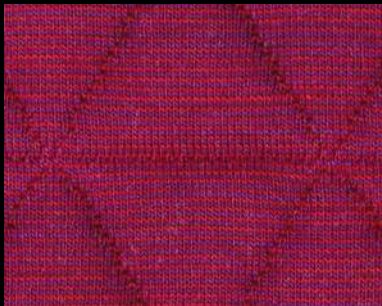
charcoal 0192



ice 0732



copper 0252



violet 0662



saffier 0792



Technical details

Composition	17% wool - 5% polyamide - 13% polyester - 65% polyester filling
Weight	Gr./m² 1,440
Abrasion test	Martindale - ISO 12947-2: 60.000 rubs
Lightfastness	ISO 105-B02: 7
Pilling	ISO 12945-2: 4/5
Fastness to rubbing	ISO 105-X12: Wet 4 Dry 4
Flame retardant	AS/NZS 1530.3 BS 5852 part 1 IMO FTP Code 2010 Part 8 NFPA 260 US Cal. Bull. 117-2013 DIN 4102 B2 EN 1021-1/2 ASTM E84 Class A Unadhered IMO FTP Code 2010 Part 9 AS/NZS3837 class 3
Feature	STRETCH MATERIAL
Environment	GREENGUARD GOLD HPD EPD