



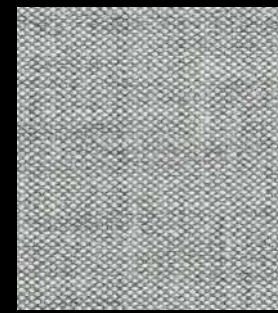
# Remix 3

cat. Super

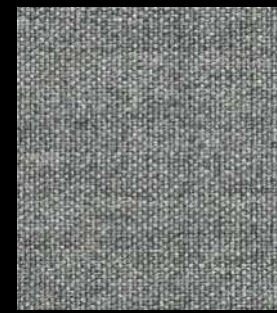
90% new wool worsted - 10% nylon  
Flame retardant - 100.000 Martindale



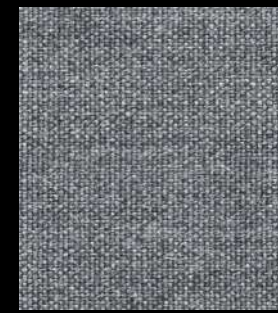
0113



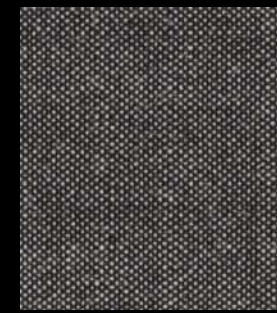
0123



0133



0143



0152



0163



0173



0183



0223



0233



0242



0252



0362



0373



0383



0393



0412



0422



0433



0443



0452



0543



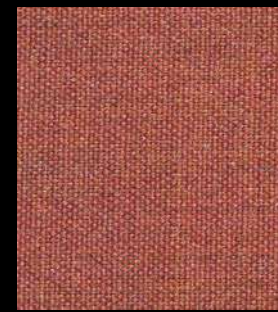
0612



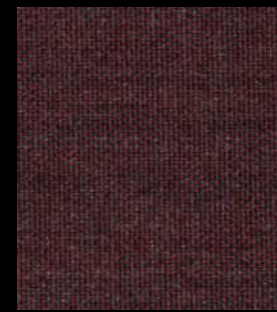
0632



0643



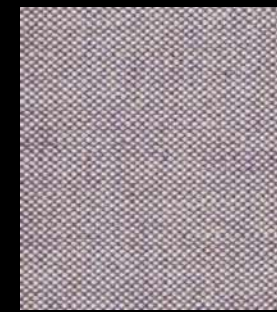
0653



0662



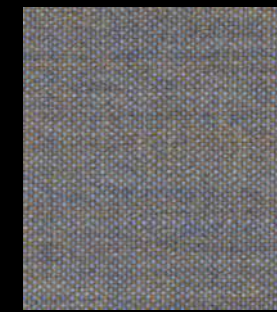
0672



0682



0692



0722



0733



0743



0762



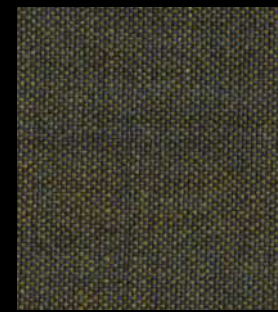
0773



0783



0823



0842



0852



0873



0912



0923



0933



0942



0954



0962



0973



0982



		Remix 3	eco-sustainable	Technical details	
				Composition	90% new wool worsted - 10% nylon
				Weight	Gr./m² 420
				Abrasion test	Martindale - ISO 12947-2: 100.000 rubs
				Lightfastness	ISO 105-B02: 5/7
				Pilling	ISO 12945-2: 4
				Flame retardant	AS/NZS 1530.3 AS/NZS 3837 class 2 ASTM E84 Class A Unadhered ASTM E84 Class A Adhered BS 5852 part 1 EN 1021-1/2 IMO FTP Code 2010 Part 8 NF D 60 013 NFPA 260 UNI 9175 1IM US Cal. Bull. 117-2013 ÖNORM B1/Q1
				Environment	EU ECOLABEL GREENGUARD CERTIFICATION GREENGUARD GOLD CERTIFICATION HPD EPD
laCividina				cat. Super	2023