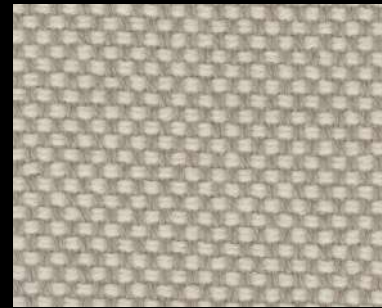


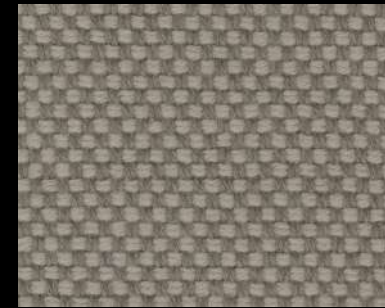
Sisu

cat. Special

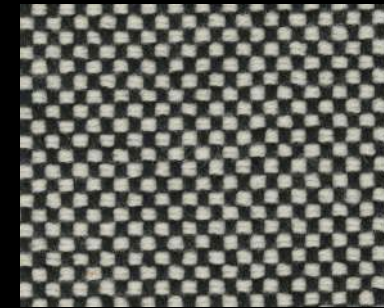
91% new Norwegian wool 8% new New Zealand wool 1%
Flame retardant - 70.000 Martindale



0105



0125



0165



0175



0195



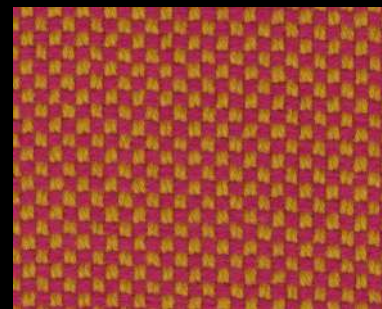
0225



0375



0405



0525



0645



0655



0765



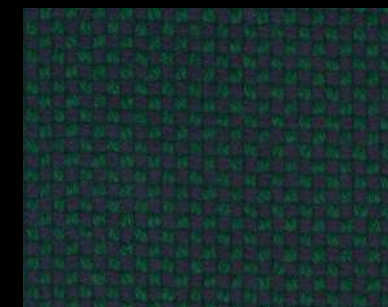
0775



0785



0805



0885

Technical details

Composition 91% new Norwegian wool 8% new New Zealand wool 1% nylon

Weight Gr./m² 1.100

Abrasion test Martindale - ISO 12947-2: 70.000 rubs

Lightfastness ISO 105-B02 7

Pilling ISO 12945-2: 3/4

Fastness to rubbing ISO 105-X12: Wet 4-5 / Dry 4-5

Flame retardant AS/NZS 3837 class 2
ASTM E84 Class B Adhered
ASTM E84 Class B Unadhered
BS 5852 part 1
EN 1021-1/2
IMO FTP Code 2010 Part 8
NF D 60 013
UNI 9175 1IM
US Cal. Bull. 117-2013

Environment GREENGUARD CERTIFICATION
GREENGUARD GOLD CERTIFICATION
HPD
EPD