

carbon



mirror



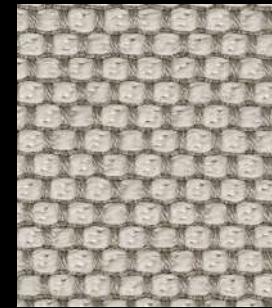
fango



taupe



flanell



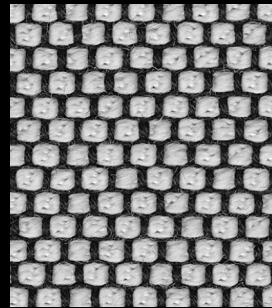
macadamia



calla



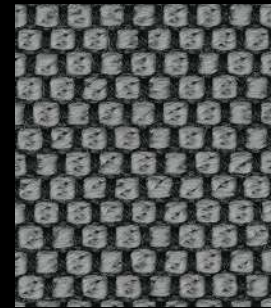
kristall



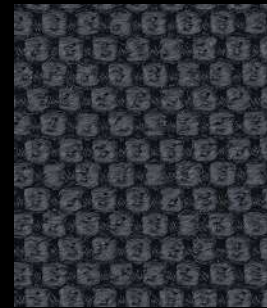
pepper



ebony



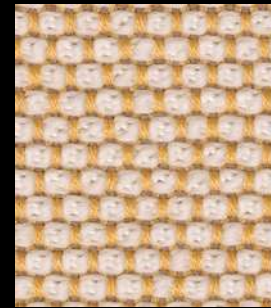
kies



anthrazit



rosewood



sorbet



aureo



prime



maple



lake



brick



jade



bleu



delft



navy



delphi



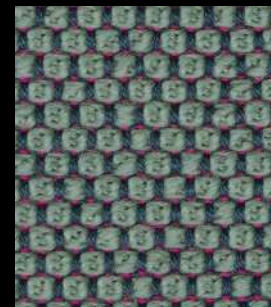
indio



guave



clementine



aloe



smaragd

Opera

cat. Extra

96% virgin wool - 4% polyamide
Flame retardant - 90.000 Martindale

Technical details

Composition	96% virgin wool - 4% polyamide
Weight	Gr./ml. 1010
Abrasion test	Martindale - ISO 12947-2: 90.000 rubs
Lightfastness	ISO 105-B02: 5/8
Pilling	ISO 12945-2: 4/5
Flame retardant	FAR 25.853 (12 sec. vertical) CAL TB 117 - 2013 DIN 4102-1 B2 EN 13501-1 EN 1021 1/2 BS 5852:2006 (part1) BS 5852:2006 (part2) Crib5 UNI 9175 (1 IM) IMO: 2014/90/EU Marine Equipment Directive
Features	NATURAL MATERIAL SOFT TOUCH
Environment	NATURAL RENEWABLE MATERIAL IWTO GUIDELINES FOR WOOL SHEEP WELFARE