

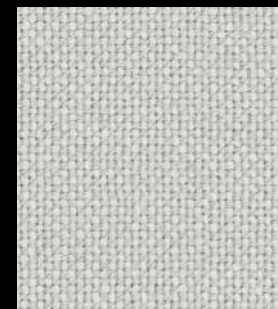
Hallingdal 65

cat. Maxi

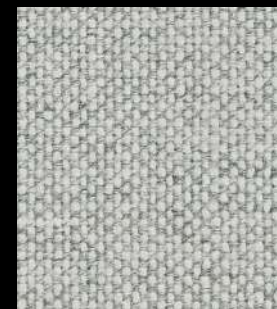
70% new wool - 30% viscose
Flame retardant - 100.000 Martindale



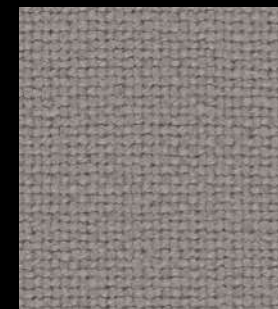
0100



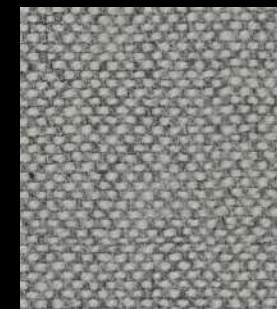
0103



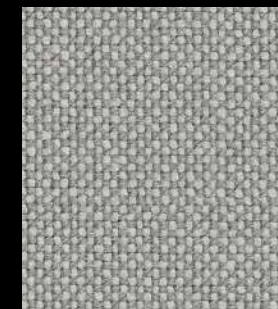
0110



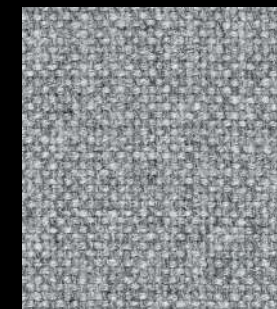
0113



0116



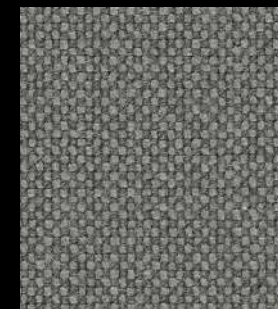
0123



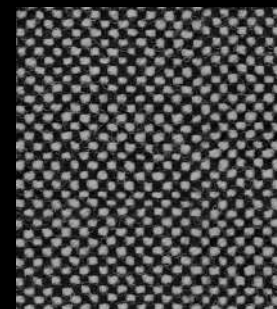
0130



0143



0153



0166



0173



0180



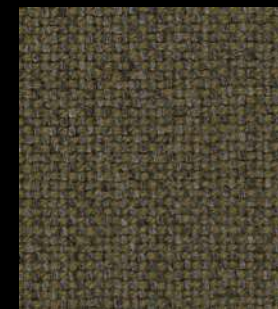
0190



0200



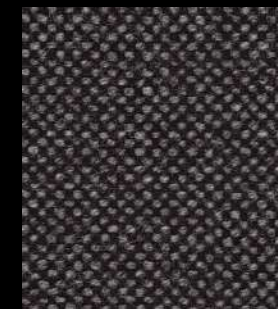
0220



0227



0270



0368



0370



0376



0407



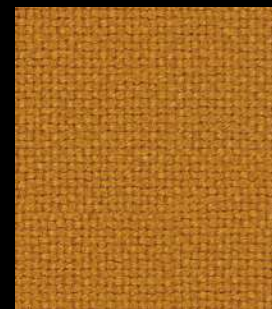
0420



0457



0526



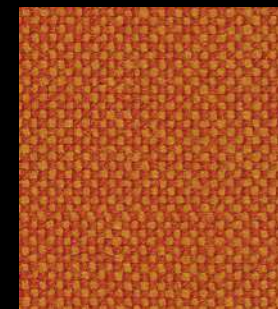
0547



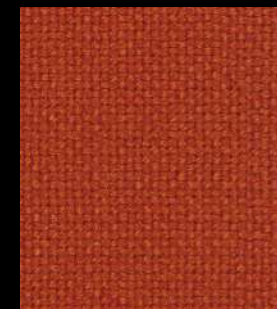
0563



0573



0590



0600



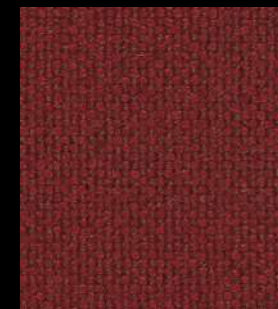
0657



0674



0680



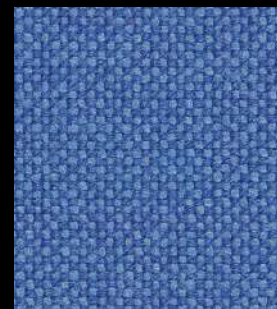
0687



0702



0723



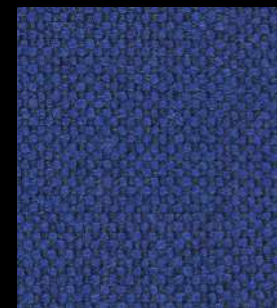
0733



0750



0753



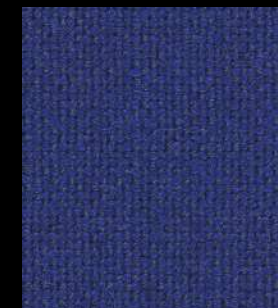
0754



0763



0764



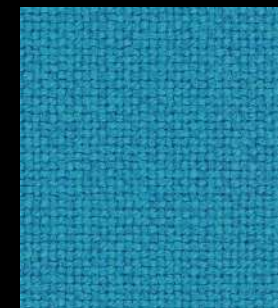
0773



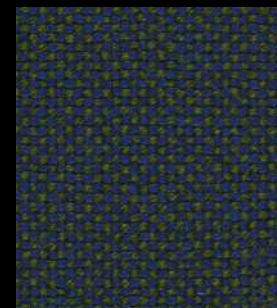
0810



0840



0850



0890



0960



0980

laCividdina

cat. Maxi

2023

eco-sustainable Hallingdal 65

Technical details

Composition	70% new wool - 30% viscose
Weight	Gr./ml. 795
Abrasion test	Martindale - ISO 12947-2: 100.000 rubs
Lightfastness	ISO 105-B02: 5-7
Pilling	ISO 12945-2: 3-4
Flame retardant	AS/NZS 1530.3 AS/NZS 3837 class 2 ASTM E84 Class A Adhered ASTM E84 Class B Unadhered BS 5852 Crib 5 BS 5852 part 1 EN 1021-1/2 IMO FTP Code 2010 Part 8 NF D 60 013 NFPA 260 ÖNORM B1/Q1 UNI 9175 1IM US Cal. Bull. 117-2013
Environment	EU ECOLABEL GREENGUARD GOLD HPD EPD