

Uniform Mélange

cat. Maxi

68% new wool 22% nylon 10% polyester
Flame retardant - 100.000 Martindale



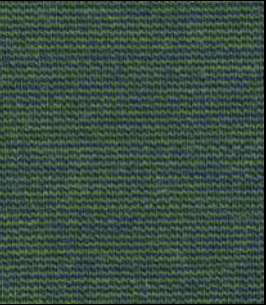
aloë 0913



oase 0963



cyan 0833



peacock 0983



cactus 0993



ice 0813



jeans 0723



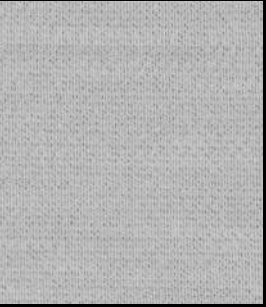
sea 0753



hydro 0883



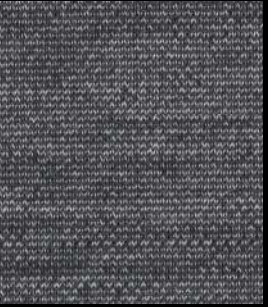
ink 0793



smoke 0123



ash 0133



stone 0163



chalk 0183



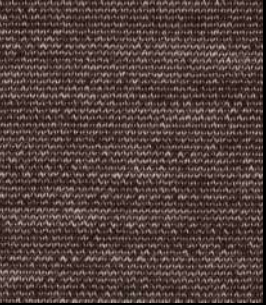
charcoal 0193



shell 0103



clay 0153



café 0283



sunset 0463



autumn 0553



solar 0453



copper 0353



oil 0333



coral 0623



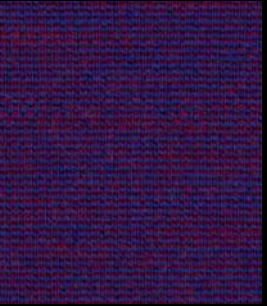
rumba 0563



tango 0593



violet 0633



blueberry 0683

Composition

68% new wool 22% nylon 10% polyester

Weight

Gr./ml 870

Abrasion test

Martindale - ISO 12947-2: 100.000 rubs

Lightfastness

ISO 105-B02: 6

Pilling

ISO 12945-2: 4

Fastness to rubbing

ISO 105-X12: Wet 4
Dry 4/5

Flame retardant

EN 1021-1/2
BS 5852 part 1
DIN 4102-B2
US Cal. Tech. Bull. 117
IMO FTP Code part 8
BS 5852 Crib 5 with treatment

Features

STRETCH MATERIAL

Environment

GREENGUARD GOLD
HPD
EPD