



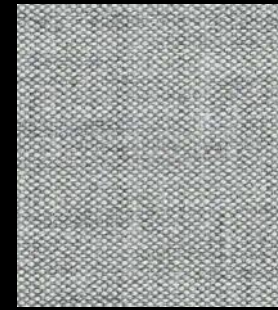
Remix 2

cat. Super

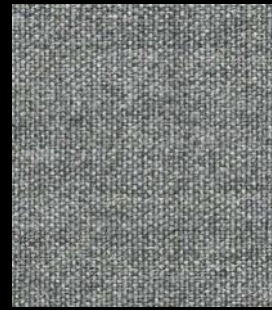
90% new wool worsted - 10% nylon
Flame retardant - 100.000 Martindale



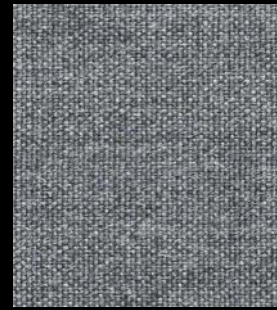
113



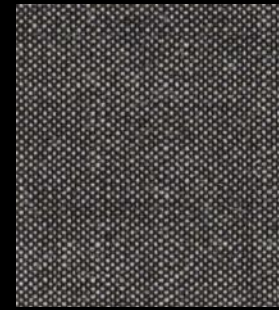
123



133



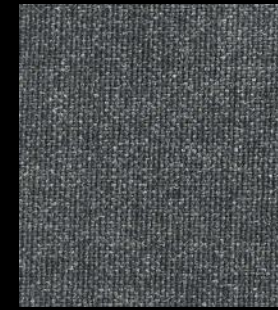
143



152



163



173



183



223



233



242



252



362



373



383



393



412



422



433



443



452



543



612



632



643



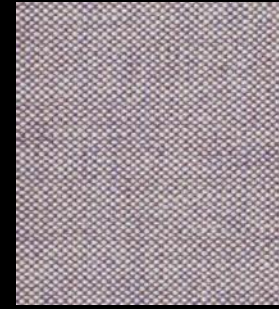
653



662



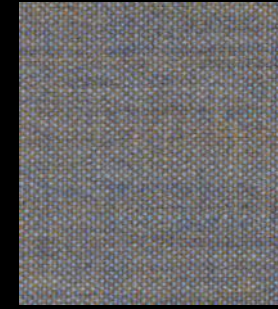
672



682



692



722



733



743



762



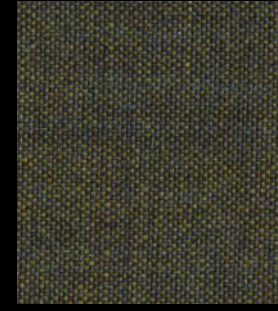
773



783



823



842



852



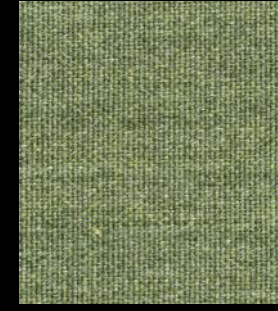
873



912



923



933



942



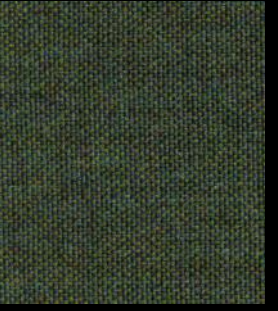
954



962



973



982

		Remix 2	Technical details	
			Composition	90% new wool worsted - 10% nylon
			Weight	Gr./ml. 415
			Abrasion test	Martindale - ISO 12947-2: 100.000 rubs
			Lightfastness	ISO 105-B02: 5/7
			Pilling	ISO 12945-2: 4
			Flame retardant	AS/NZS 1530.3 AS/NZS 3837, class 2 BS 5852 Crib 5 with treatment BS 5852 part 1 EN 1021-1/2 IMO FTP Code 2010 Part 8 NF D 60 013 NFPA 260 UNI 9175 1IM US Cal. Bull. 117-2013 ÖNORM B1/ Q1
			Environment	Complies with EU ecolabel "The Flower"
laCividina			cat. Super	2018