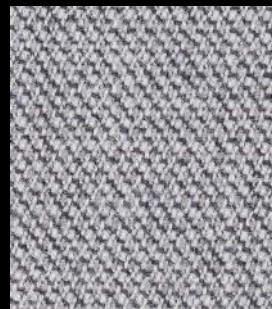




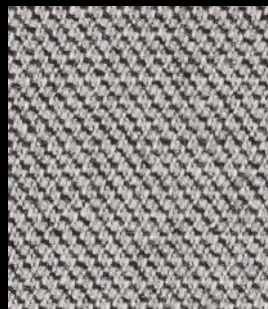
# Capture

cat. Super

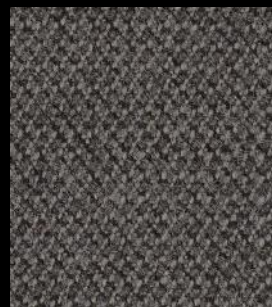
85% wools of New Zealand - 15% polyamide  
Flame retardant - 200.000 Martindale



4102



4001



4201



4803



5401



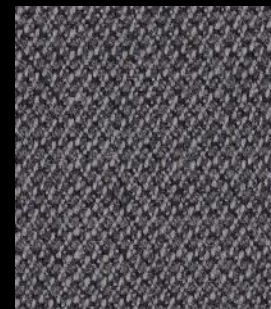
5402



5103



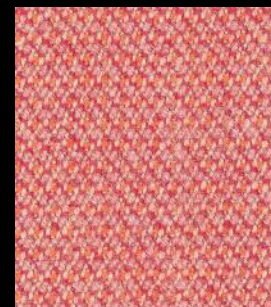
5102



4601



5501



4802



4301



5201



4902



5101



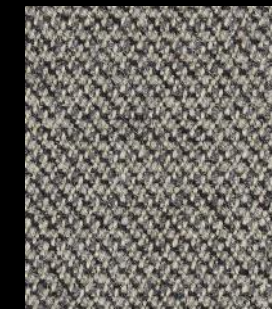
5301



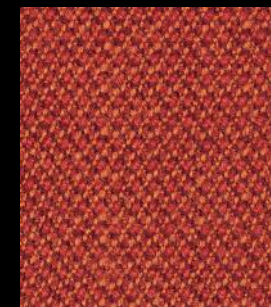
4101



4801



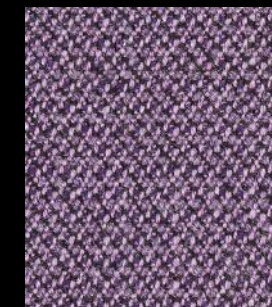
4401



4702



4701



4501



4901



5002



5001



Technical details

|                     |   |
|---------------------|---|
| Composition         | 85% wools of New Zealand - 15% polyamide  |
| Weight              | Gr./ml. 475   |
| Abrasion test       | Martindale - ISO 12947-2: 200.000 rubs  |
| Lightfastness       | ISO 105 B02: 5/7  |
| Pilling             | ISO 12945-2: 4/5  |
| Fastness to rubbing | ISO 105-X12: Wet 4/5<br>Dry 4/5   |
| Flame retardant     | BS EN 1021 1&2 Cigarette and Match<br>BS 5852 Part 1 0,1 Cigarette & Match<br>Class Uno UNI 9175 Class 1 I EMME<br>CA TB 117-2013 |
| Environment         | Oeko-Tex 100 certified<br>EU Ecolabel<br>100% free of heavy metals  |