

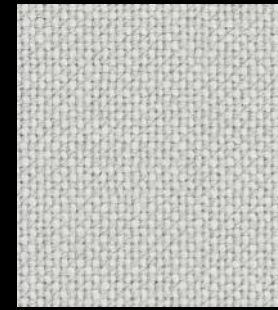
# Hallingdal 65

cat. Maxi

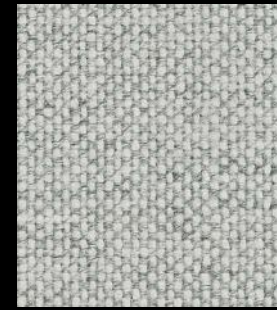
70% new wool - 30% viscose  
Flame retardant - 100.000 Martindale



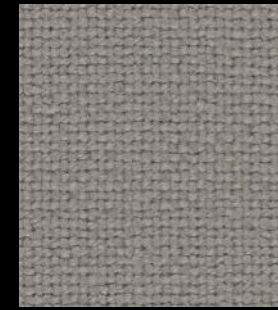
100



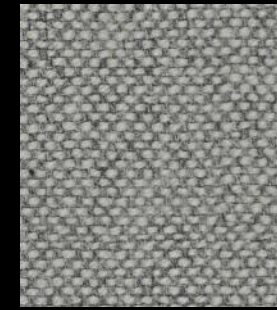
103



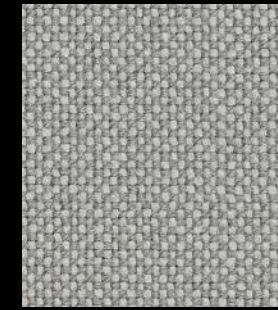
110



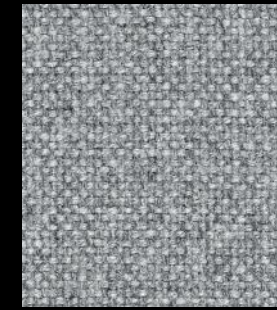
113



116



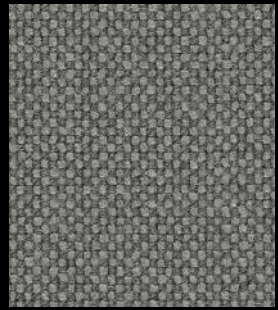
123



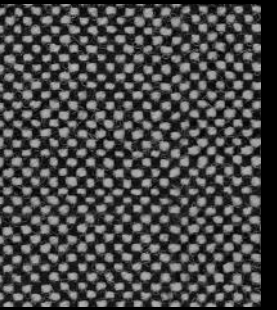
130



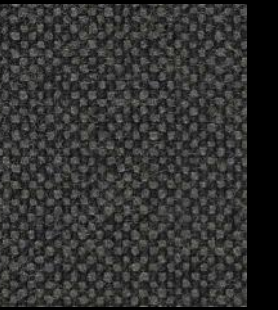
143



153



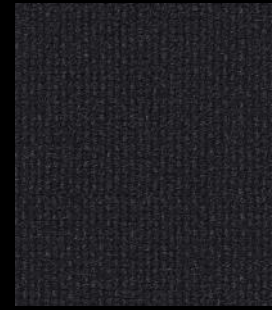
166



173



180



190



200



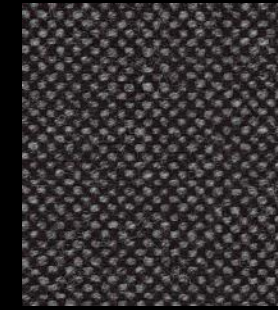
220



227



270



368



370



376



407



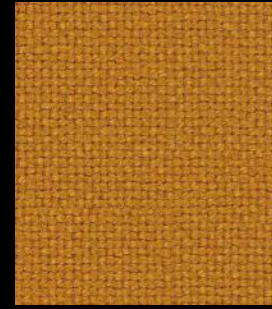
420



457



526



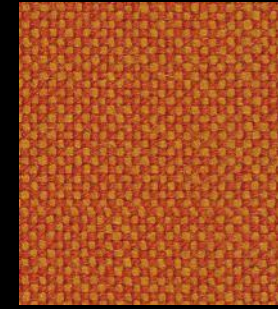
547



563



573



590



600



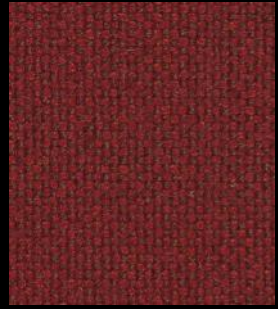
657



674



680



687



702



723



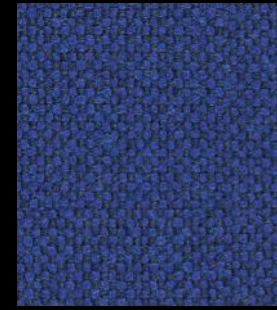
733



750



753



754



763



764



773



810



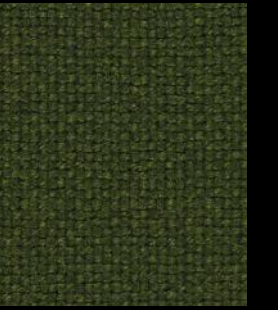
840



850



890



960



980



Hallingdal 65

## Technical details

|                 |   |
|-----------------|---|
| Composition     | 70% new wool - 30% viscose  |
| Weight          | Gr./ml. 795   |
| Abrasion test   | Martindale - ISO 12947-2: 100.000 rubs  |
| Lightfastness   | ISO 105-B02: 5-7  |
| Pilling         | ISO 12945-2: 3  |
| Flame retardant | AS/NZS 1530.3<br>AS/NZS 3837<br>BS 5852 Crib 5<br>BS 5852 part 1<br>DIN 4102 B2<br>EN 1021-1/2<br>IMO FTP Code 2010 Part 8<br>NF D 60 013<br>NFPA 260<br>ÖNORM B1/Q1<br>SN 198 898 5.3 with treatment<br>UNI 9175 1IM<br>US Cal. Bull. 117-2013 |
| Environment     | Complies with EU ecolabel "The Flower"  |

laCividdina

cat. Maxi

2018